



LP48-L1-BL(LR)



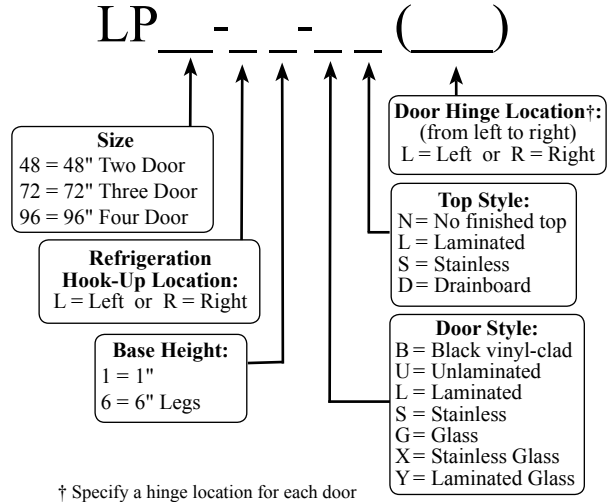
*LP48 units with R404a and LP72 and LP96 units with R134a expansion valves are not UL listed.

COMPONENT

NSF standard 7 listed for open food storage

Project: _____	AIA# _____
Item #: _____ Qty: _____	SIS# _____
Model #: _____	

Low Profile Coolers Two, Three and Four Door Remote



Standard Features

- Remote unit
- Stainless steel die cast handle
- All stainless steel interior construction with radius interior corners for easy cleaning
- Stainless steel evaporator housing with separate removable evaporator drain pan
- CFC free foamed-in-place insulation
- Leg sockets recessed into base
- Galvanized steel sub-top
- 1/2" thick ABS plastic threshold scuff plate
- Black vinyl-clad steel doors and exterior sides
- 180° swinging doors

Specifications

Electrical

- 120V, 1 phase, 60 Hz
- Dedicated 15 amp circuit is required
- 14 gauge wire connection is made inside the cooler next to evaporator housing - interior access is through one of the 3/4" side knock-out holes (electrician's choice)

Refrigeration

- R134a* or R404a* expansion valve & temperature control included. Specify type required when ordering.
- Recommended condensing unit:
LP48 - 1/4 HP which has an approximate rating of 2,200 BTU/H at +20°F evaporator temperature
LP72 and LP96 - 1/3 HP which has an approximate rating of 3,064 BTU/H at +20°F evaporator temperature
- All refrigeration hookups are made at the installation site

Plumbing

- A ten foot length of 1/2" ID by 5/8" OD plastic tubing is provided to drain condensate. The tubing should exit through one of the 3/4" side knock-out holes (installer's choice). The maximum drainage is one ounce per hour - consult local codes for compliance - a floor drain may be required

Shelving

- One adjustable coated shelf and one bottom coated rack per door included

Legs

- 1-5/8" diameter
- Stainless steel bullet feet

Materials

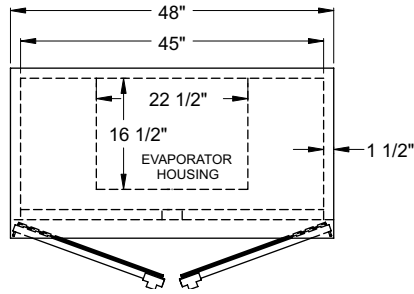
- 22 gauge stainless steel parts include: interior floor, walls, ceiling, front of cabinet, and evaporator housing
- 22 gauge black vinyl-clad parts include: sides and standard doors
- 22 gauge galvanized steel parts include: exterior sub-top and back
- 16 gauge stainless steel parts include: legs
- 16 gauge galvanized steel parts include: base
- 16 gauge zinc plated CR steel parts include: leg sockets
- 12 gauge stainless steel parts include: hinges, hinge brackets, and lock brackets

<p>Glastender, Inc. • 5400 N Michigan Rd • Saginaw, MI • 48604-9780 989.752.4275 • 800.748.0423 • Fax 989.752.4444 www.glastender.com</p>	<p>Approval/Notes:</p>
<p>Specifications subject to change without notice. For current specifications please visit our website.</p>	

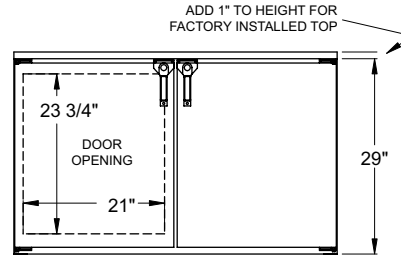
Remote Low Profile Coolers

Dimensional Information

LP48

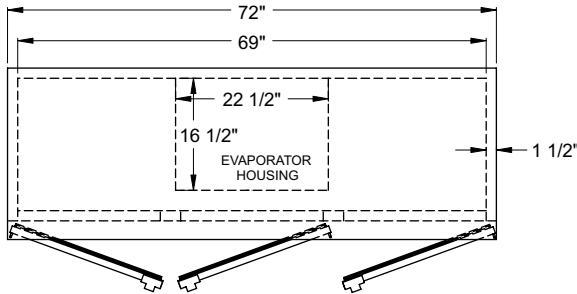


Plan View

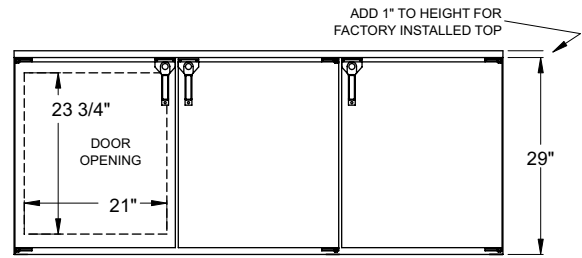


Front Elevation

LP72

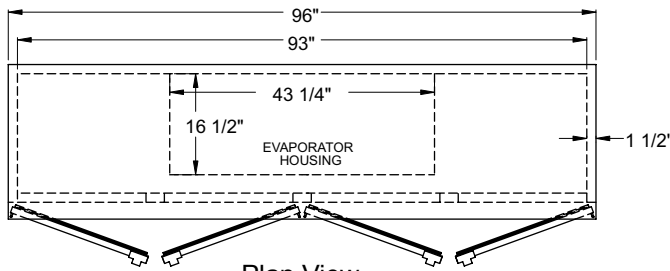


Plan View

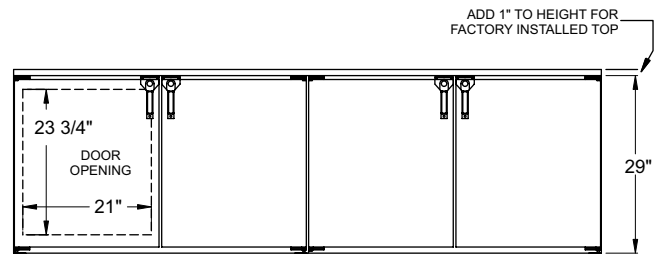


Front Elevation

LP96

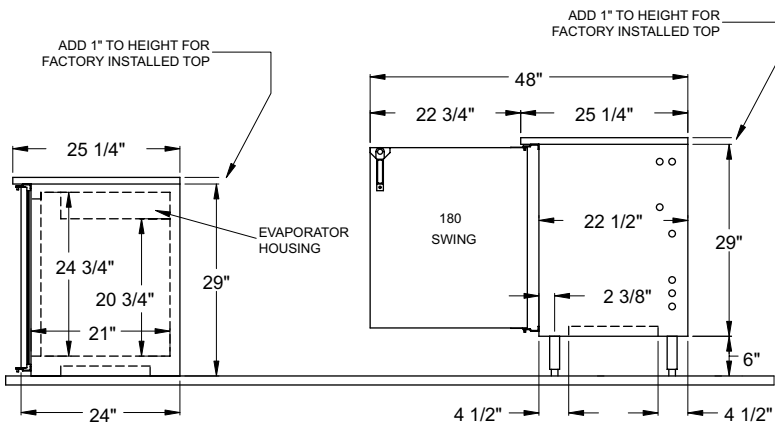


Plan View



Front Elevation

Side View All Models



STANDARD CABINET

WITH OPTIONAL 6\"/>

Model	Capacity: 12 oz. bottle	Refrigeration	Voltage
LP48	10.5 cases	1/4 H.P. Recommended	120v / 60 Hz / 1 phase
LP72	16.34 cases	1/3 H.P. Recommended	120v / 60 Hz / 1 phase
LP96	22.16 cases	1/3 H.P. Recommended	120v / 60 Hz / 1 phase



5400 N Michigan Rd • Saginaw, MI • 48604-9780
 989.752.4275 • 800.748.0423 • Fax 989.752.4444
 www.glastender.com