



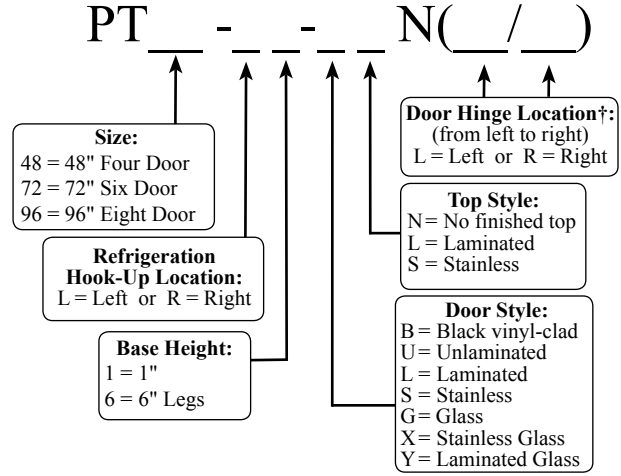
PT48-L1-SNN(LL/RR)



*PT48 units with R404a and PT72 and PT96 units with R134a expansion valves are not UL listed.

Project: _____	AIA# _____
Item #: _____ Qty: _____	SIS# _____
Model #: _____	

Pass-Thru Coolers Four, Six and Eight Door Remote



Standard Features

- Remote unit
- Stainless steel evaporator housing with separate removable evaporator drain pan
- All stainless steel interior construction
- Leg sockets recessed into base
- Foamed-in-place insulation
- 1/2" thick ABS plastic threshold scuff plate
- Galvanized steel sub-top
- 180° swinging doors
- Black vinyl-clad steel doors and exterior sides

Specifications

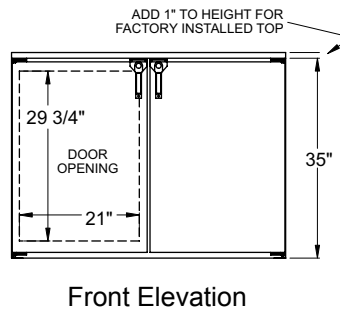
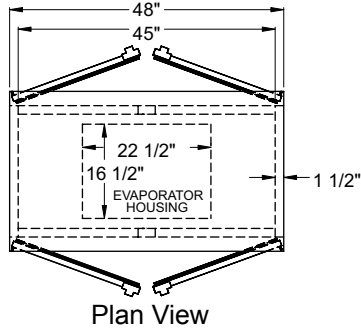
- Electrical**
- 120V, 1 phase, 60 Hz
 - Dedicated 15 amp circuit is required
 - 14 gauge wire connection is made inside the cooler next to evaporator housing - interior access is through one of the 3/4" side knock-out holes (electrician's choice)
- Refrigeration**
- R134a* or R404a* expansion valve & temperature control included. Specify type required when ordering.
 - Recommended condensing unit:
PT48 - 1/4 HP which has an approximate rating of 2,200 BTU/H at 20°F evaporator temperature
PT72 and PT96 - 1/3 HP which has an approximate rating of 3,064 BTU/H at 20°F evaporator temperature
 - All refrigeration hookups are made at the installation site
- Plumbing**
- A ten foot length of 1/2" ID by 5/8" OD plastic tubing is provided to drain condensate. The tubing should exit through one of the 3/4" side knock-out holes (installer's choice). The maximum drainage is one ounce per hour - consult local codes for compliance - a floor drain may be required
- Shelving**
- Two adjustable coated shelves and one bottom coated rack per door included
- Legs**
- 1-5/8" diameter
 - Stainless steel bullet feet
- Materials**
- 22 gauge stainless steel parts include: interior floor, walls, ceiling, front of cabinet, and evaporator housing
 - 22 gauge black vinyl-clad parts include: sides and standard doors
 - 22 gauge galvanized steel parts include: exterior sub-top
 - 16 gauge stainless steel parts include: legs
 - 16 gauge galvanized steel parts include: base
 - 16 gauge zinc plated CR steel parts include: leg sockets
 - 12 gauge stainless steel parts include: hinges, hinge brackets, and lock brackets

Glastender, Inc. • 5400 N Michigan Rd • Saginaw, MI • 48604-9780 989.752.4275 • 800.748.0423 • Fax 989.752.4444 www.glastender.com	Approval/Notes:
Specifications subject to change without notice. For current specifications please visit our website.	

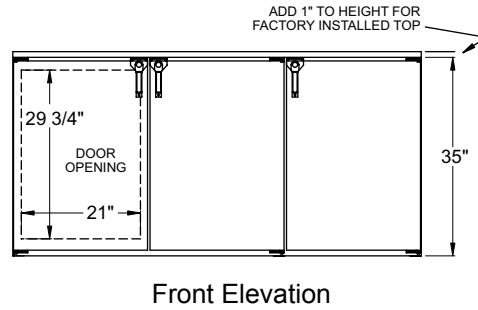
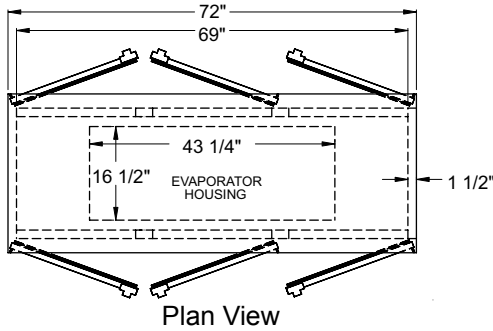
Remote Pass-Thru Coolers

Dimensional Information

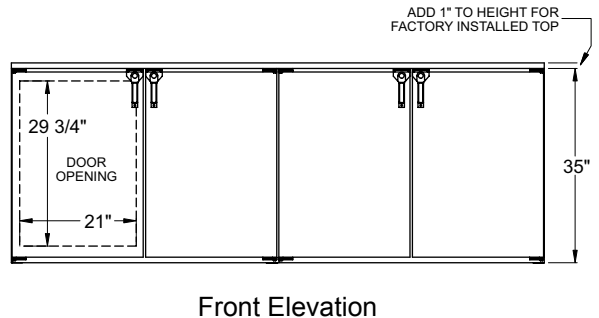
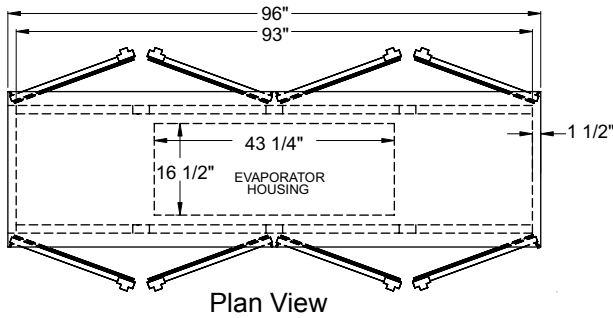
PT48



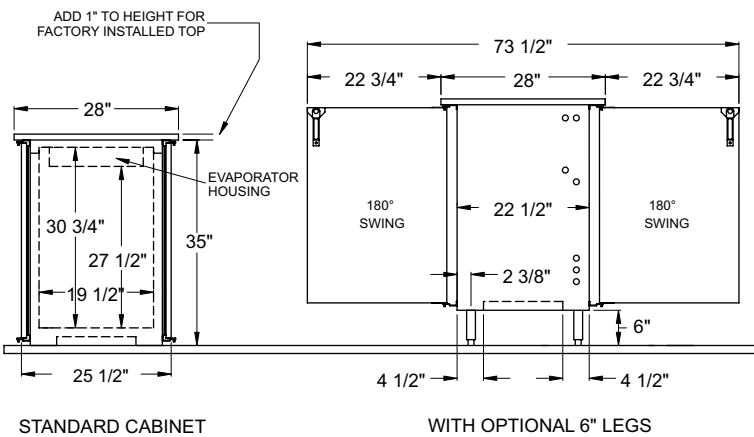
PT72



PT96



Side View All Models



Model	Capacity: 12 oz. bottle / 1/2 barrels	Refrigeration	Voltage
PT48	12.83 cases / 2 half barrels	1/4 H.P. Recommended	120v / 60 Hz / 1 phase
PT72	19.25 cases / 4 half barrels	1/2 H.P. Recommended	120v / 60 Hz / 1 phase
PT96	28.58 cases / 5 half barrels	1/2 H.P. Recommended	120v / 60 Hz / 1 phase